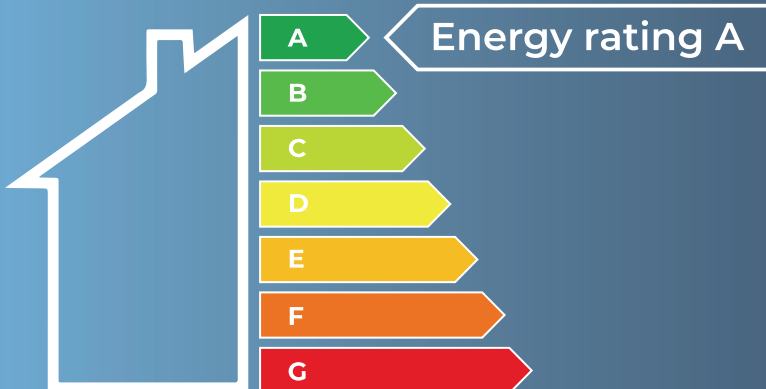




A - RATED HOT WATER CYLINDERS



Eco series

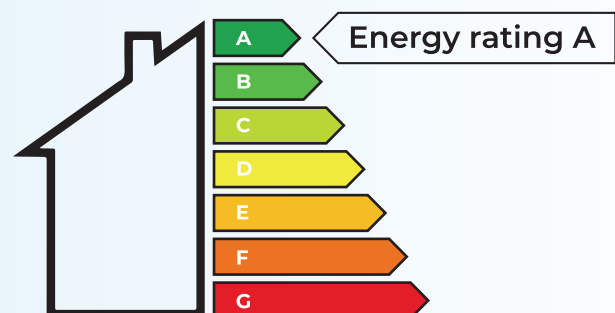
The Eco Series cylinders by NRG Awareness are high-quality cylinders that can meet the requirements of modern heating systems. Equipped with corrugated stainless-steel coils that offer a high surface area, they are suitable for use with heat pumps as well as conventional boilers.

A high level of insulation minimises standing heat losses and saves energy. These cylinders are made from high-quality Duplex steel, which makes them more resistant to corrosion than traditional stainless-steel cylinders.

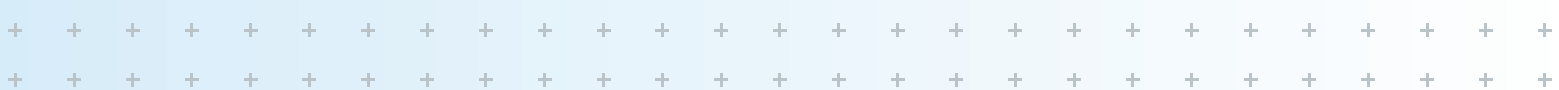
- Corrugated High-Recovery Coils: Designed for use with Heat Pumps
- High grade Duplex steel makes our cylinders more resistant to corrosion
- An Mg Anode enhances corrosion resistance further
- All Eco Series Cylinders come with a 3-kW electric immersion
- With a high level of insulation, all Eco Series Cylinders have an energy rating of A
- 5-year warranty:
 - *For all water types, including well water*
 - *No servicing requirements*



CONDITIONAL EXTENDED
WARRANTY AVAILABLE
ON REQUEST



ALL OUR CYLINDERS ARE A-RATED





ECO 200

200L indirect hot water cylinder.



TECHNICAL DATA

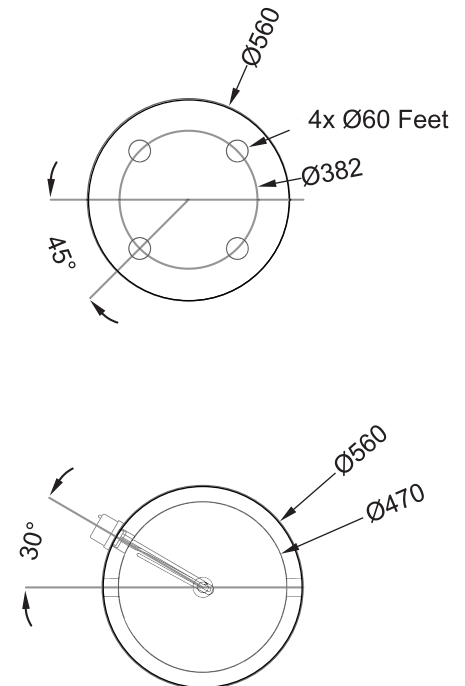
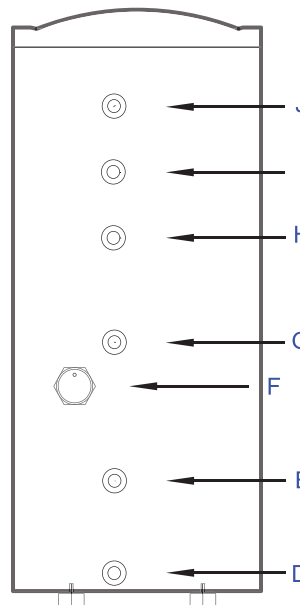
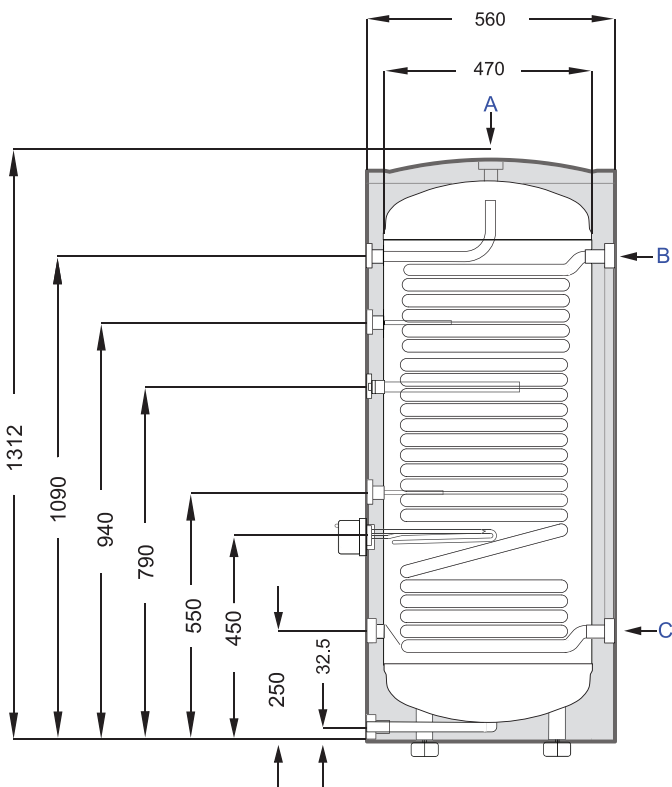
Nominal capacity	L	200
Inner tank material		SS DUPLEX 2205
Inner tank thickness		1.0
Outer Case Material		Galvanized steel with white paint
Outer Case Thickness	mm	0.5
Insulation		Environmental Friendly Polyurethane Foaming
Insulation thickness	mm	45
Heat Loss	W	33
Anode		Magnesium Anode
Connections		All Connections are Female
Electrical heater type		3kW electric heater with thermostat

Coil (Heat Exchanger) Material	SUS316L	
Coil Size	28mm x 25m (Corrugated)	
Coil Surface Area	m ²	3.2

Working pressure	bar	6
Max. testing pressure	bar	10
Packing size	mm	630*630*1400
Weight	kg	45

Connections

		M/F	SIZE	COLOUR
A	Exhaust	F	G 3/4"	RED
B	Coil Inlet	F	G 1"	RED
C	Coil Outlet	F	G 1"	BLUE
D	Drain	F	G 3/4"	BLUE
E	Cold Water Inlet	F	G 1"	BLUE
F	Electric Heater (Immersion)	F	G 1 1/2"	RED
G	Temperature Sensor	F	G 1/2"	BLUE
H	Magnesium Anode	F	G 3/4"	RED
I	Temperature Sensor	F	G 1/2"	BLUE
J	Hot Water Outlet	F	G 1"	RED





ECO 300

300L indirect hot water cylinder.



TECHNICAL DATA

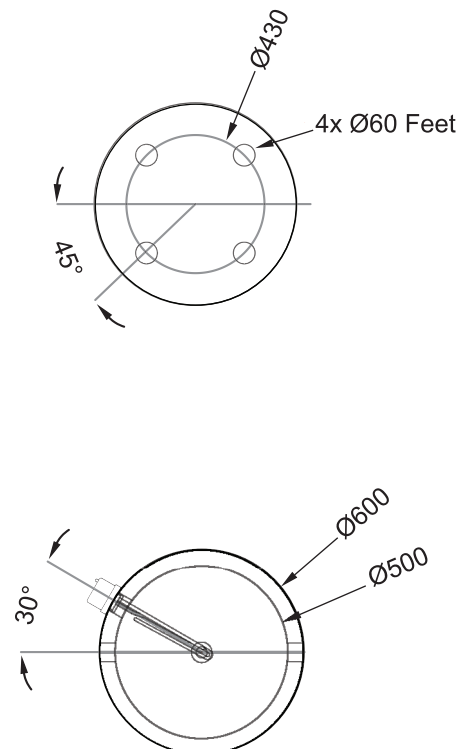
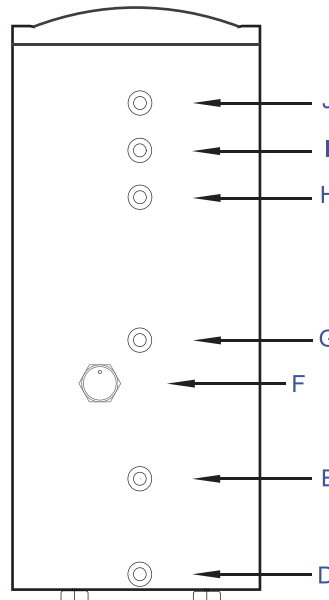
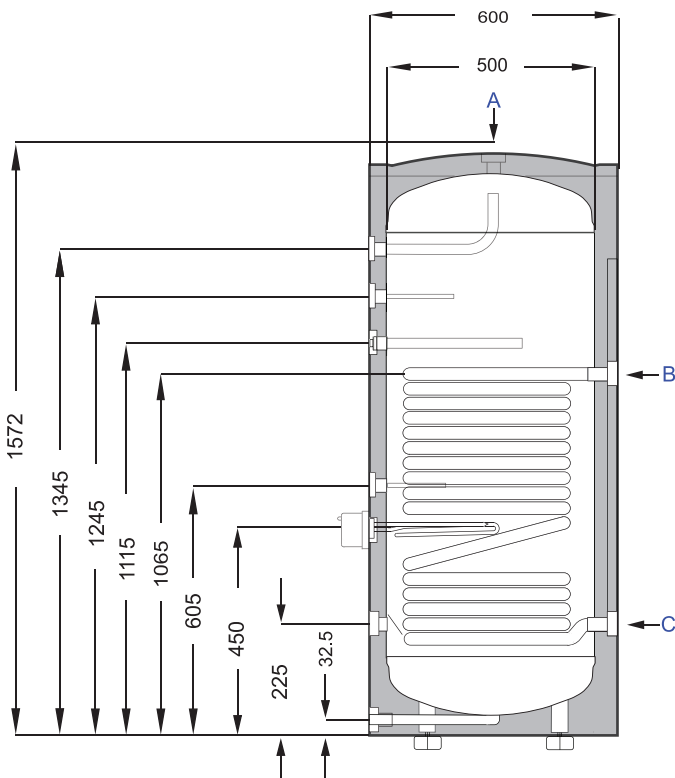
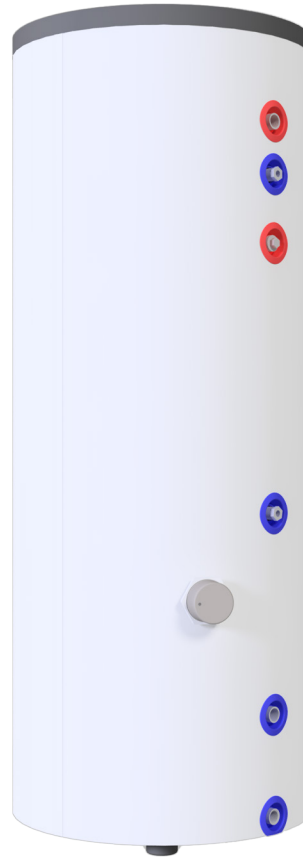
Nominal capacity	L	300
Inner tank material		SS DUPLEX 2205
Inner tank thickness		1.0
Outer Case Material		Galvanized steel with white paint
Outer Case Thickness	mm	0.5
Insulation		Environmental Friendly Polyurethane Foaming
Insulation thickness	mm	50
Heat Loss	W	40
Anode		Magnesium Anode
Connections		All Connections are Female
Electrical heater type		3kW electric heater with thermostat

Coil (Heat Exchanger) Material	SUS316L	
Coil Size	28mm x 25m (Corrugated)	
Coil Surface Area	m ²	3.2

Working pressure	bar	6
Max. testing pressure	bar	10
Packing size	mm	670*670*1650
Weight	kg	65

Connections

		M/F	SIZE	COLOUR
A	Exhaust	F	G 3/4"	RED
B	Coil Inlet	F	G 1"	RED
C	Coil Outlet	F	G 1"	BLUE
D	Drain	F	G 3/4"	BLUE
E	Cold Water Inlet	F	G 1"	BLUE
F	Electric Heater (Immersion)	F	G 1 1/2"	RED
G	Temperature Sensor	F	G 1/2"	BLUE
H	Magnesium Anode	F	G 3/4"	RED
I	Temperature Sensor	F	G 1/2"	BLUE
J	Hot Water Outlet	F	G 1"	RED





ECO 500

500L indirect hot water cylinder.



TECHNICAL DATA

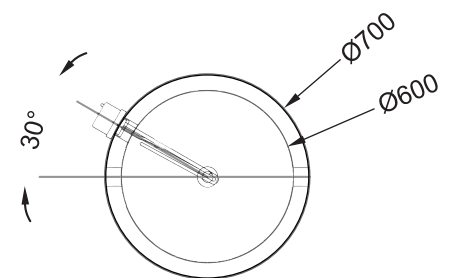
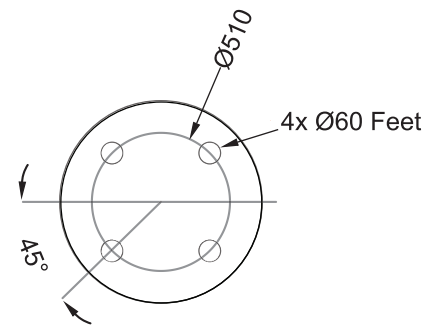
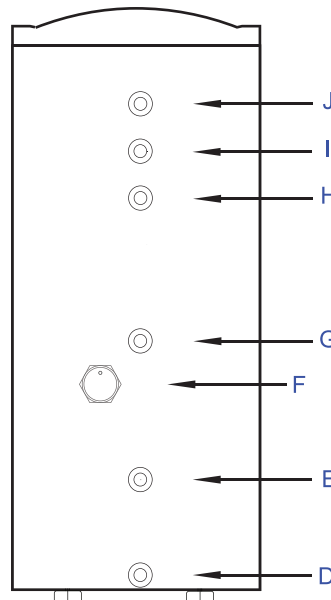
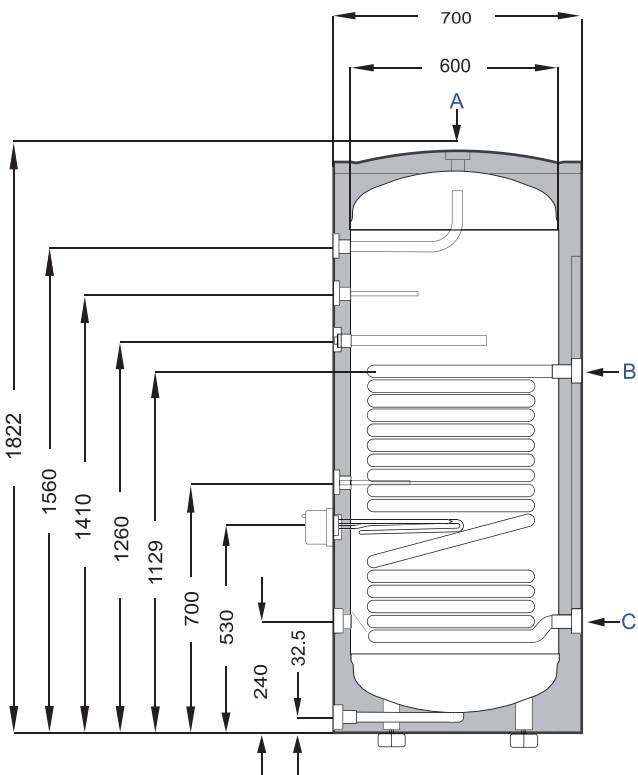
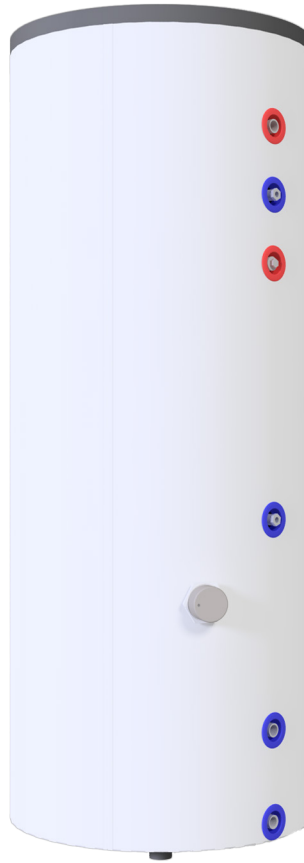
Nominal capacity	L	500
Inner tank material		SS DUPLEX 2205
Inner tank thickness		1.5
Outer Case Material		Galvanized steel with white paint
Outer Case Thickness	mm	0.5
Insulation		Environmental Friendly Polyurethane Foaming
Insulation thickness	mm	50
Heat Loss	W	52
Anode		Magnesium Anode
Connections		All Connections are Female
Electrical heater type		3kW electric heater with thermostat

Coil (Heat Exchanger) Material	SUS316L	
Coil Size	28mm x 30m (Corrugated)	
Coil Surface Area	m ²	4.1

Working pressure	bar	6
Max. testing pressure	bar	10
Packing size	mm	768*768*1940
Weight	kg	96

Connections

		M/F	SIZE	COLOUR
A	Exhaust	F	G 3/4"	RED
B	Coil Inlet	F	G 1"	RED
C	Coil Outlet	F	G 1"	BLUE
D	Drain	F	G 3/4"	BLUE
E	Cold Water Inlet	F	G 1"	BLUE
F	Electric Heater (Immersion)	F	G 1 1/2"	RED
G	Temperature Sensor	F	G 1/2"	BLUE
H	Magnesium Anode	F	G 3/4"	RED
I	Temperature Sensor	F <td G 1/2"	BLUE	
J	Hot Water Outlet	F	G 1"	RED





ECO BUFFER

100L direct buffer.



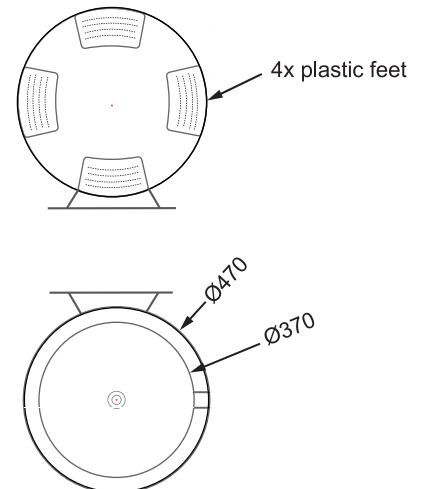
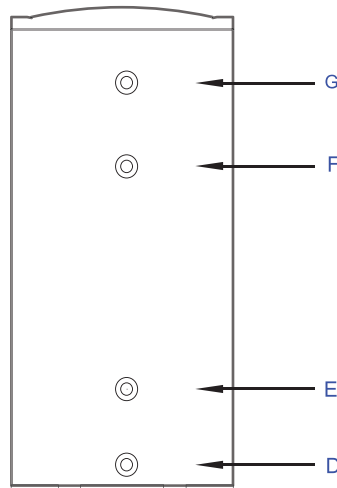
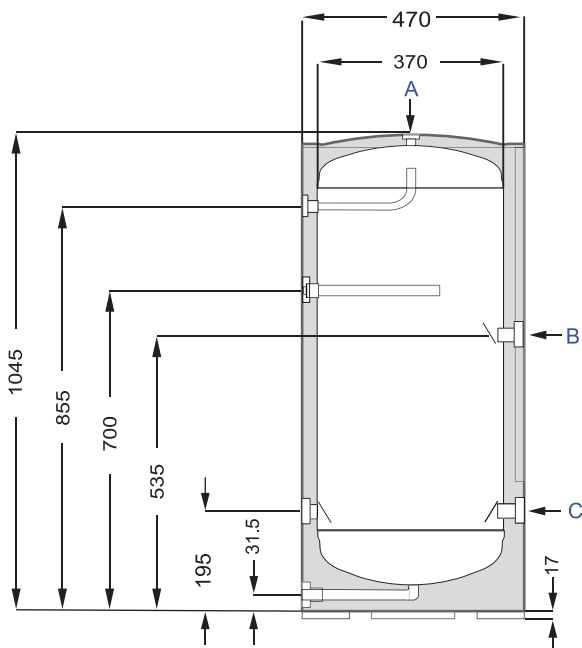
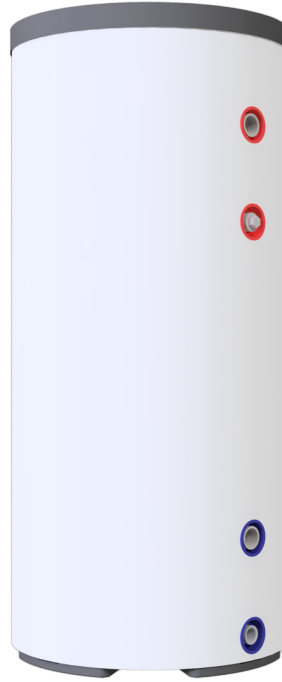
TECHNICAL DATA

Nominal capacity	L	100
Inner tank material		SS DUPLEX 2205
Inner tank thickness		1.0
Outer Case Material		Galvanized steel with white paint
Outer Case Thickness	mm	0.5
Insulation		Environmental Friendly Polyurethane Foaming
Insulation thickness	mm	50
Heat Loss	W	28
Anode		Magnesium Anode
Connections		All Connections are Female

Working pressure	bar	6
Max. testing pressure	bar	10
Packing size	mm	540*540*1110
Weight	kg	26

Connections

		M/F	SIZE	COLOUR
A	Exhaust	F	G 3/4"	RED
B	Circulation	F	G 1"	RED
C	Circulation	F	G 1"	BLUE
D	Drain	F	G 1/2"	BLUE
E	Cold Water Inlet	F	G 1"	BLUE
F	Magnesium Anode	F	G 3/4"	RED
G	Hot Water Outlet	F	G 1"	RED





nrgEcoPlus

The Future-Proof Heating System solution

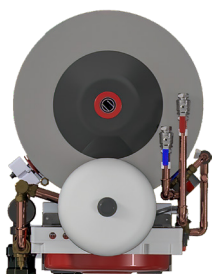


The EcoPlus pre-plumbed heating system enables installers to adopt best practices for optimal system performance, enhancing their reputations and reducing their customers' running costs.

Thanks to our patents, the EcoPlus has secured a competitive advantage in the market by prioritising installer-friendliness and customer satisfaction.

The pre-plumbed system offers advanced techniques such as enhanced heat distribution, deaeration, optimised water temperature differentials, precise system neutral-point location, and integration of proven heating industry strategies like close-coupled tees with primary-secondary pumping.

While these benefits may seem complex, they are what differentiate between merely average and truly satisfactory installations. EcoPlus provides all the essential components for standard domestic zoned heating installations, requiring only 0.6 m² of valuable floor area. Designed with convenience in mind, it allows easy access to all serviceable parts from the front, simplifying maintenance or repair.

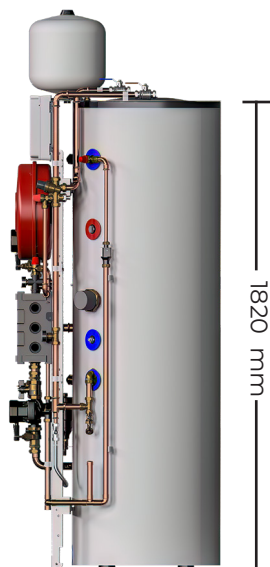


Top View



Bottom View

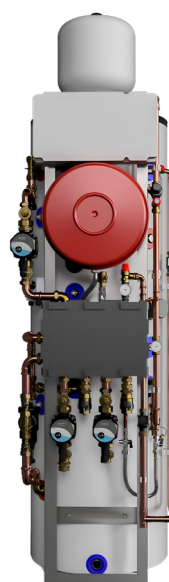
820 mm



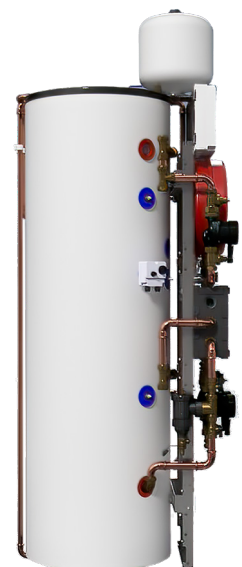
1820 mm

Right Side View

675 mm



Front View




2135 mm

Left Side View



NRG Awareness is a pioneer in the heating industry, offering energy effective heating system design combined with ongoing support for installers, resulting in successful partnerships throughout the construction or retrofit process.




 +353 214 355728

 info@nrgawareness.com

 nrgawareness.com

SEA BOX Energy T/A NRG Awareness

 Brooklodge East, Glanmire,
Co. Cork, Ireland, T45 Y018

SEA BOX Energy is a part of SeaBox Group



Visit NRG Awareness.com

Material contained in this publication may not be produced in whole or in part without prior permission in writing from NRG Awareness. All the products shown in this brochure are protected by intellectual property rights owned by NRG Awareness.

